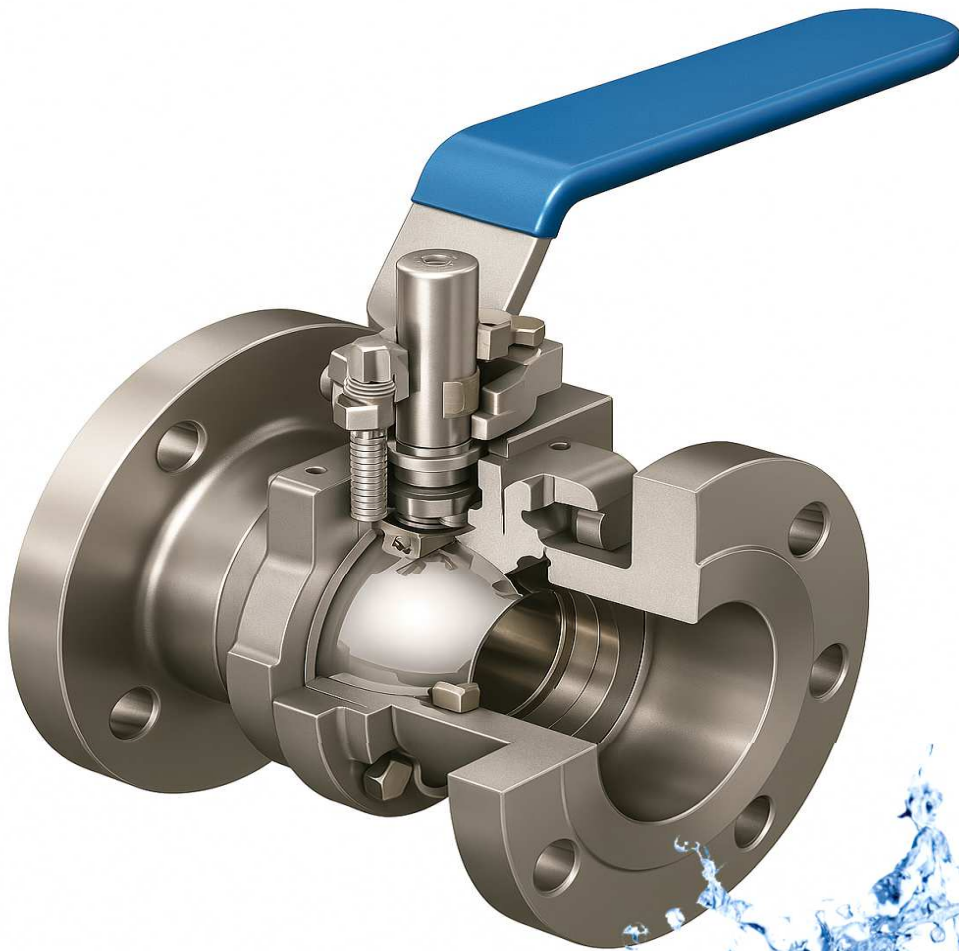




DECOEN Tech
Engineering Services

Ball Valve



“Precision Shutoff. Zero Leakage. Maximum Reliability.”

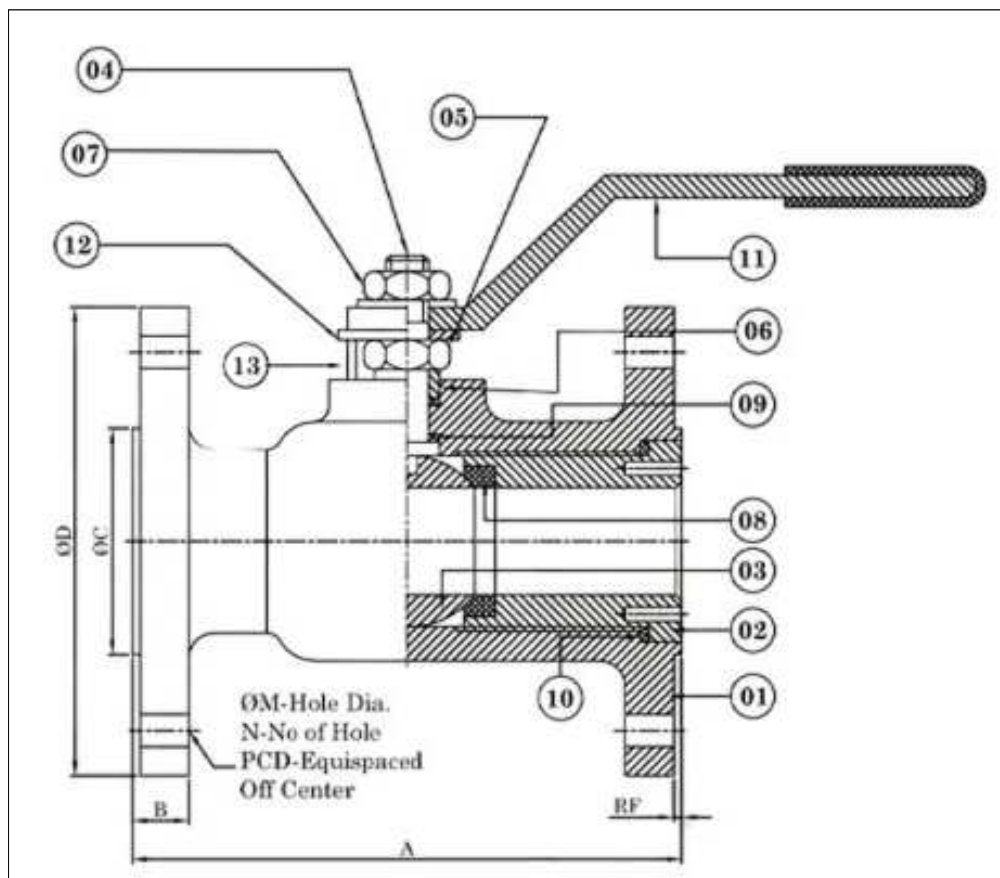
WWW.DECOENTECH.COM

Single Piece Ball Valve

The [Single Piece Ball Valve](#) from DECOEN Tech is a compact and economical solution ideal for applications requiring reliable shut-off and flow control. Made from durable materials, this valve offers excellent resistance to pressure and temperature variations. Its simple design ensures minimal leakage points and ease of operation, making it a preferred choice for industries like water treatment, chemical processing, and HVAC systems.

Technical Data

Design & Manufacturing Std	BS 5351 / IS:9890 / API 602
Testing & Inspection Std	API 598
Face to Face	As Per ANSI B 16.10
End Connection	Flanged As per ANSI B 16.5
Socket Weld & Threaded	SCREWED (BSP, BSPT, NPT)



No.	Description	Material	Qty.
1	Body	C.I / C.S / S.S.304 / S.S.316	1
2	Return Nut	C.I / C.S / S.S.304 / S.S.316	2
3	Ball	AISI 304 / AISI 316	1
4	Stem	AISI 304 / AISI 316	1
5	Gland Nut	AISI 304 / AISI 316	1
6	Gland Bush	AISI 304 / AISI 316	1
7	Lock Nut	AISI 304 / AISI 316	1
8	Seat Ring	PTFE	2
9	Stem Seal	PTFE	2
10	Body Seal Ring	PTFE	1
11	Wrench	C.S / S.S.304 / S.S.316	1
12	Stop	C.S / S.S.304 / S.S.316	1
13	Stopper Pin	C.S / S.S.304 / S.S.316	1

Flange Dimensions

Flanged End – Class 150

Sr.No.	Size	A	B	ØC	ØD	ØM	N	PCD
1	15mm	-	11.1	35	89	16	4	60.4
2	20mm	-	12.7	43	98.5	16	4	70
3	25mm	127	11	51	108	16	4	79.2
4	40mm	165.1	14.2	73	127	16	4	98.5
5	50mm	203	15.7	92	152	19	4	120.6
6	65mm	216	17.5	105	178	19	4	139.7
7	80mm	241	19	127	190.5	19	4	152.4
8	100mm	292	24	157	229	19	8	190.5
9	125mm	356	24	186	254	22	8	215.9
10	150mm	406	25	216	279	22	8	241.3
11	200mm	495	28.5	270	343	22	8	298.4
12	250mm	622	30	324	406	25	12	362
13	300mm	698	32	381	483	25	12	431.8
14	350mm	787	35	410	533	28	12	431.8

(DIMENSIONS ABOVE 350 MM AVAILABLE ON REQUEST)

Flanged End – Class 300

Sr.No.	Size	A	B	ØC	ØD	ØM	N	PCD
1	15mm	140	14.2	35	95	16	4	66.5
2	20mm	152	15.7	43	117	19	4	82.5
3	25mm	165	17.5	51	124	19	4	88.9
4	32mm	178	19	64	133	19	4	98.5
5	40mm	190.5	20.5	73	155.5	22	4	114.3
6	50mm	216	22	92	165	19	8	127
7	65mm	241	25	105	190.5	22	8	149.3
8	80mm	282.5	28.5	127	209.5	22	8	168
9	100mm	305	32	157	254	22	8	200
10	125mm	381	35	186	279.4	22	8	235
11	150mm	403	36.5	216	317.5	22	12	269.7
12	200mm	419	41	270	381	25	12	330.2
13	250mm	457	47.5	324	444.5	28	16	387.4

(DIMENSIONS ABOVE 250 MM AVAILABLE ON REQUEST)

Screw | Socket

Sr.No.	Size	A
1	15mm	72
2	20mm	77
3	25mm	87
4	32mm	101
5	40mm	117
6	50mm	127
7	65mm	151
8	80mm	171

(DIMENSIONS ABOVE 80 MM AVAILABLE ON REQUEST)

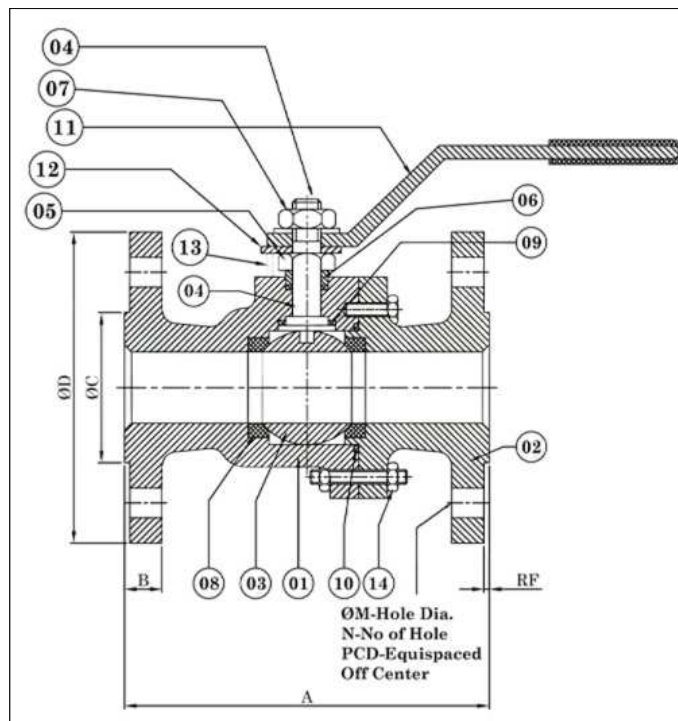
Two Piece Ball Valve

The Two Piece Ball Valve provides enhanced flexibility and ease of maintenance with its detachable design. This valve combines robust construction with efficient sealing to handle high-pressure and high-temperature applications effectively. Its versatility and ease of cleaning make it a popular choice for oil and gas, petrochemical, and industrial processes where reliability is paramount.

Technical Data

Design & Manufacturing Std	BS 5351 / API 6D
Testing & Inspection Std	API 598
Face to Face	As Per ANSI B16.10
End Connection	Flanged As Per ANSI B 16.5 150# / 300#

Components:



No.	Description	Material	Qty.
1	Body	C.I / C.S / S.S.304 / S.S.316 / A105	1
2	Body Connector	C.I / C.S / S.S.304 / S.S.316 / A105	2
3	Ball	AISI 304 / AISI 316	1
4	Stem	AISI 304 / AISI 316	1
5	Gland Nut	AISI 304 / AISI 316	1
6	Gland Bush	AISI 304 / AISI 316	1
7	Lock Nut	AISI 304 / AISI 316	1
8	Seat Ring	PTFE	2
9	Stem Seal	PTFE	2
10	Body Seal Ring	PTFE	1
11	Wrench	C.S / S.S.304 / S.S.316	1
12	Stop	C.S / S.S.304 / S.S.316	1
13	Stopper Pin	C.S / S.S.304 / S.S.316	1
14	Stud & Nut	C.S / S.S.	-

Flange Dimensions

Flanged End – Class 150

Sr.No.	Size	A	B	ØC	ØD	ØM	N	PCD
1	15mm	108	10	35	89	16	4	60.4
2	20mm	118	10.5	43	98	16	4	69.8
3	25mm	127	11	51	108	16	4	79.2
4	32mm	140	12.7	64	117	16	4	88.9
5	40mm	165	14.2	73	127	16	4	98.5
6	50mm	178	15.7	92	152	19	4	120.6
7	65mm	191	17.5	105	178	19	4	139.7
8	80mm	203	19	127	190.5	19	4	152.4
9	100mm	229	24	157	229	19	8	190.5
10	125mm	254	24	186	254	22	8	215.9
11	150mm	267	25	216	279	22	8	241.3
12	200mm	292	28.5	270	343	22	8	298.4
13	250mm	330	30	324	406	25	12	362

(DIMENSIONS ABOVE 250 MM AVAILABLE ON REQUEST)

Flanged End – Class 300

Sr.No.	Size	A	B	ØC	ØD	ØM	N	PCD
1	15mm	140	14.2	35	95	16	4	66.5
2	20mm	152	15.7	43	117	19	4	82.5
3	25mm	165	17.5	51	124	19	4	88.9
4	32mm	178	19	64	133	19	4	98.5
5	40mm	191	20.5	73	155.5	22	4	114.3
6	50mm	216	22	92	165	19	8	127
7	65mm	241	25	105	190.5	22	8	149.3
8	80mm	283	28.5	127	209.5	22	8	168
9	100mm	305	32	157	254	22	8	200
10	125mm	381	35	186	279.4	22	8	235
11	150mm	403	36.5	216	317.5	22	12	269.7
12	200mm	419	41	270	381	25	12	330.2
13	250mm	457	47.5	324	444.5	28	16	387.4

(DIMENSIONS ABOVE 250 MM AVAILABLE ON REQUEST)

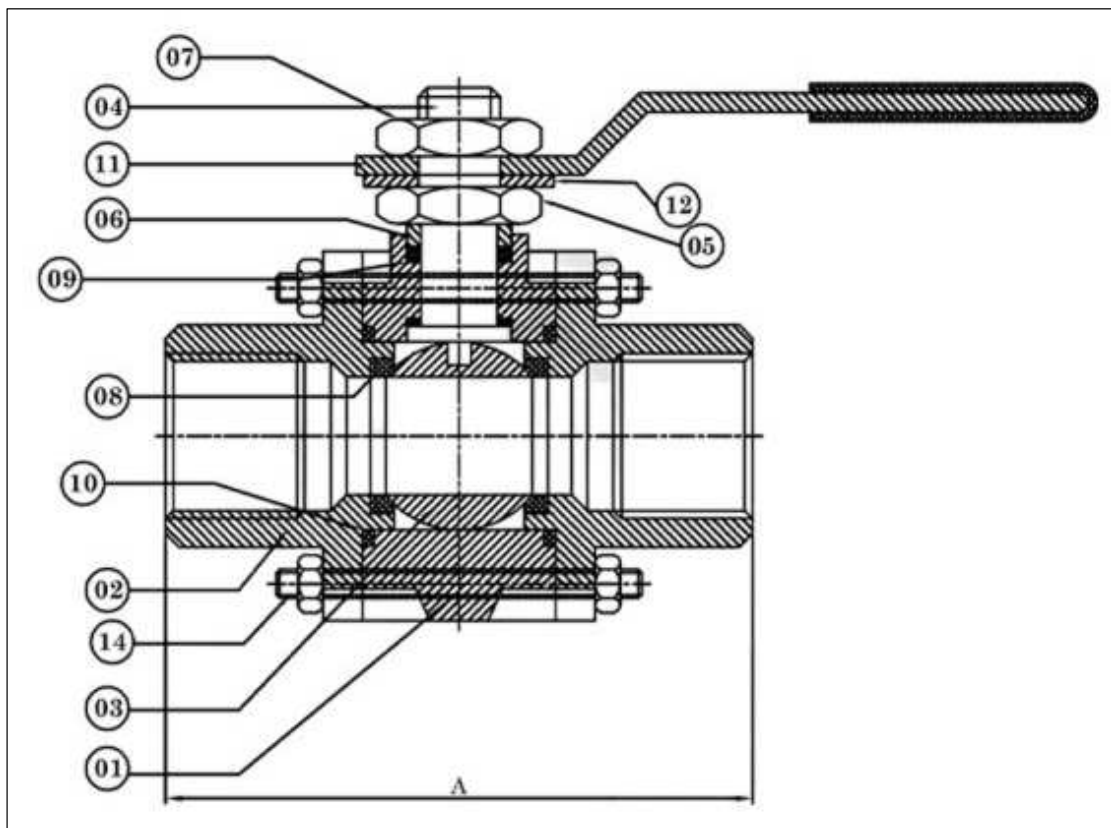
Three Piece Ball Valve

A Three-Piece Ball Valve is a type of valve used to control the flow of fluids in a pipeline. It is called a "three-piece" valve because its construction consists of three main components. These valves are available in various configurations, 3pc screw/socket weld end ball valves, and 3pcs flange end ball valves, each offering versatility and reliability for different piping needs.

Technical Data

Design & Manufacturing Std	BS 5351 IS:9890 / API 602
Testing & Inspection Std	API 598
Face to Face	As Per ANSI B16.10
Socket Weld & Threaded	ANSI B 16.11 / ANSI B1.20.1
End Connection	Flanged as per ANSI B 16.5 150# / 300# / BSP, BSPT, NPT, SOCKET WELD

Components:



No.	Description	Material	Qty.
1	Body	C.I / C.S / S.S.304 / S.S.316 / A105	1
2	Return Nut / Body Connector	C.I / C.S / S.S.304 / S.S.316 / A105	2
3	Ball	AISI 304 / AISI 316	1
4	Stem	AISI 304 / AISI 316	1
5	Gland Nut	AISI 304 / AISI 316	1
6	Gland Bush	AISI 304 / AISI 316	1
7	Lock Nut	AISI 304 / AISI 316	1
8	Seat Ring	PTFE	2
9	Stem Seal	PTFE	2
10	Body Seal Ring	PTFE	1
11	Wrench	C.S / S.S.304 / S.S.316	1
12	Stop	C.S / S.S.304 / S.S.316	1
13	Stopper Pin	C.S / S.S.304 / S.S.316	1

Components:

Flanged End – Class 150

Sr.No.	Size	A	B	ØC	ØD	ØM	N	PCD
1	15mm	108	10	35	89	16	4	60.4
2	20mm	118	10.5	43	98	16	4	69.8
3	25mm	127	11	51	108	16	4	79.2
4	32mm	140	12.7	64	117	16	4	88.9
5	40mm	165	14.2	73	127	16	4	98.5
6	50mm	178	15.7	92	152	19	4	120.6
7	65mm	191	17.5	105	178	19	4	139.7
8	80mm	203	19	127	190.5	19	4	152.4
9	100mm	229	24	157	229	19	8	190.5
10	125mm	254	24	186	254	22	8	215.9
11	150mm	267	25	216	279	22	8	241.3
12	200mm	292	28.5	270	343	22	8	298.4
13	250mm	330	30	324	406	25	12	362

(DIMENSIONS ABOVE 250 MM AVAILABLE ON REQUEST)

Flanged End – Class 300

Sr.No.	Size	A	B	ØC	ØD	ØM	N	PCD
1	15mm	140	14.2	35	95	16	4	66.5
2	20mm	152	15.7	43	117	19	4	82.5
3	25mm	165	17.5	51	124	19	4	88.9
4	32mm	178	19	64	133	19	4	98.5
5	40mm	191	20.5	73	155.5	22	4	114.3
6	50mm	216	22	92	165	19	8	127
7	65mm	241	25	105	190.5	22	8	149.3
8	80mm	283	28.5	127	209.5	22	8	168
9	100mm	305	32	157	254	22	8	200
10	125mm	381	35	186	279.4	22	8	235
11	150mm	403	36.5	216	317.5	22	12	269.7
12	200mm	419	41	270	381	25	12	330.2
13	250mm	457	47.5	324	444.5	28	16	387.4

(DIMENSIONS ABOVE 250 MM AVAILABLE ON REQUEST)

Screw / Socket – Class 150

Sr.No.	Size	A
1	15mm	90
2	20mm	95
3	25mm	100
4	32mm	110
5	40mm	120
6	50mm	130

(DIMENSIONS ABOVE 50 MM AVAILABLE ON REQUEST)

Screw / Socket – Class 300

Sr.No.	Size	A
1	15mm	68
2	20mm	79
3	25mm	95
4	32mm	107
5	40mm	117
6	50mm	130

(DIMENSIONS ABOVE 50 MM AVAILABLE ON REQUEST)

www.decoentech.com

DECOEN Tech is committed to providing high-quality valve solutions by partnering with trusted manufacturers across the industry. All products offered through DECOEN Tech are designed and engineered by their respective OEMs to perform safely and reliably when properly selected for the intended application.

Because these products may be used in a wide range of industrial processes and operating conditions, DECOEN Tech may provide general guidelines, but cannot offer specific information or warnings for every possible scenario. Therefore, the purchaser or end user bears the ultimate responsibility for the correct selection, sizing, installation, operation, and maintenance of the valves supplied through DECOEN Tech.

Users are strongly advised to read, understand, and follow the Installation, Operation, and Maintenance (IOM) manuals provided by the original manufacturer, and ensure that employees and contractors are properly trained in the safe handling and use of these products.

While the technical data and specifications included in this catalog are believed to be accurate at the time of publication, they are intended for reference only and should not be considered as certified performance data or a guarantee of results. No warranty, express or implied, is provided by DECOEN Tech regarding the completeness or suitability of the information presented.

Since our partner manufacturers continuously update and enhance their products, specifications, dimensions, and technical details are subject to change without prior notice. For clarification or additional guidance, purchasers are encouraged to contact DECOEN Tech directly.

© 2025 DECOEN Tech. All rights reserved. DECOEN Tech is a registered entity providing engineering, design, and product supply services.